

## Appendix 4. Subgroup and Sensitivity Analyses

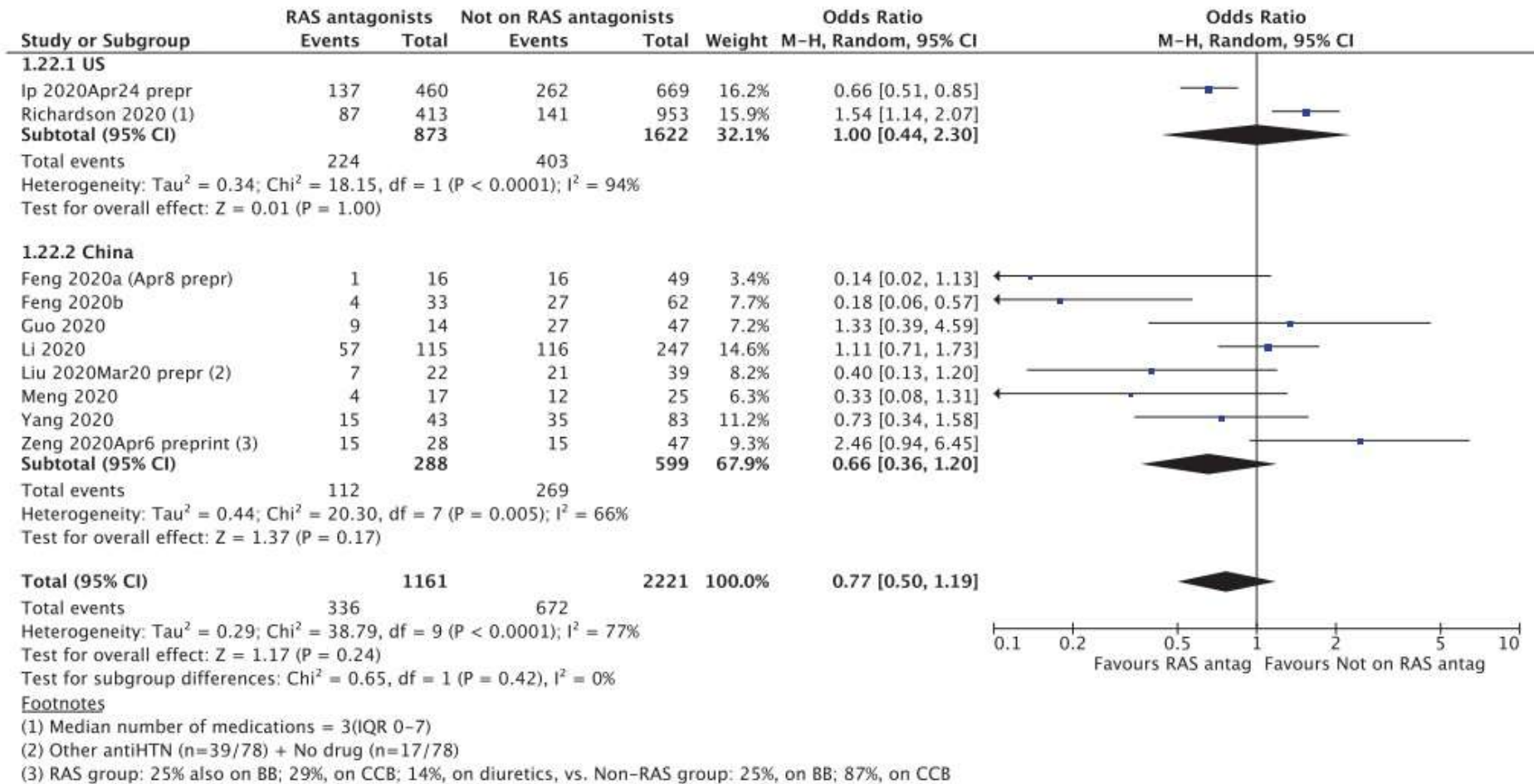
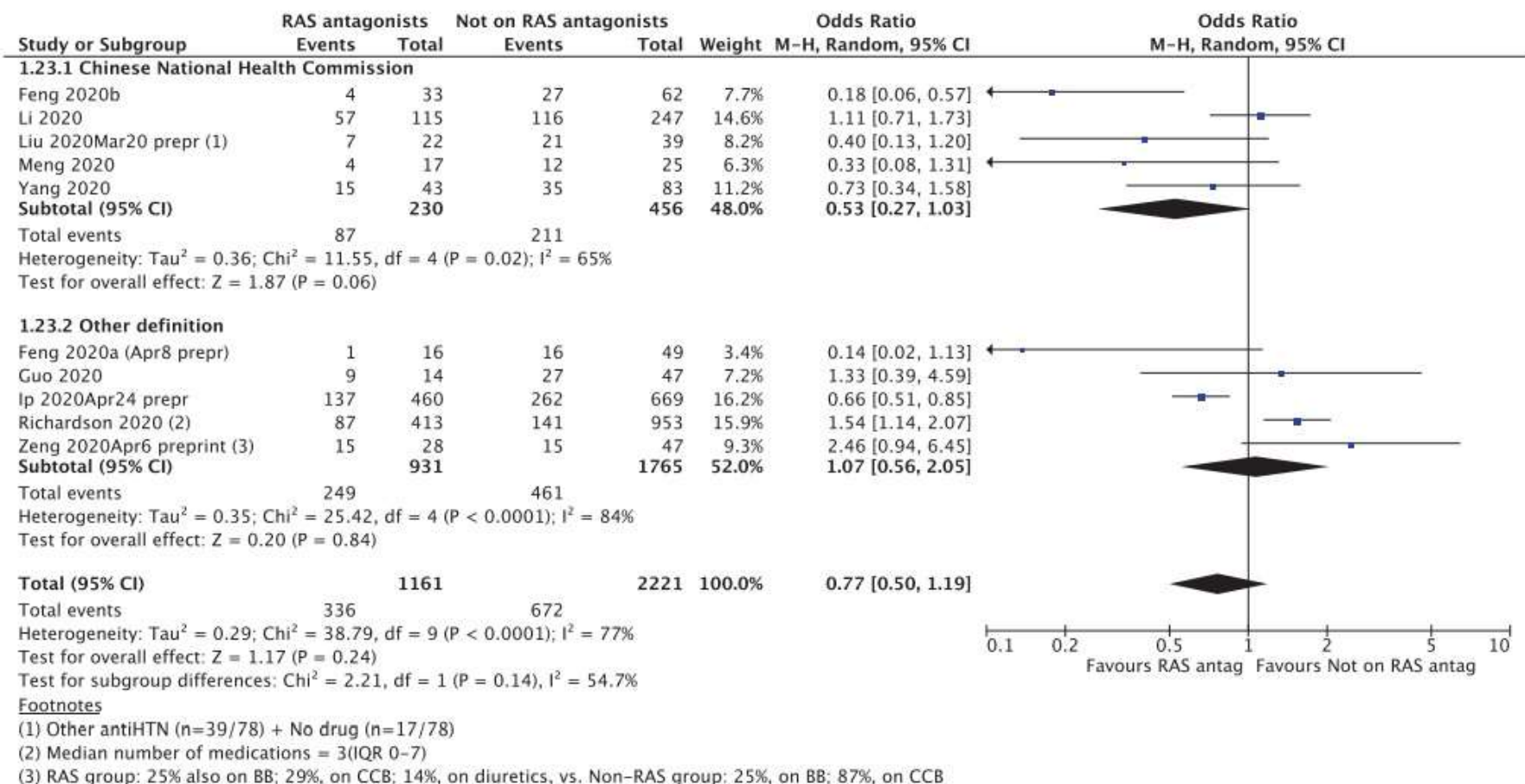
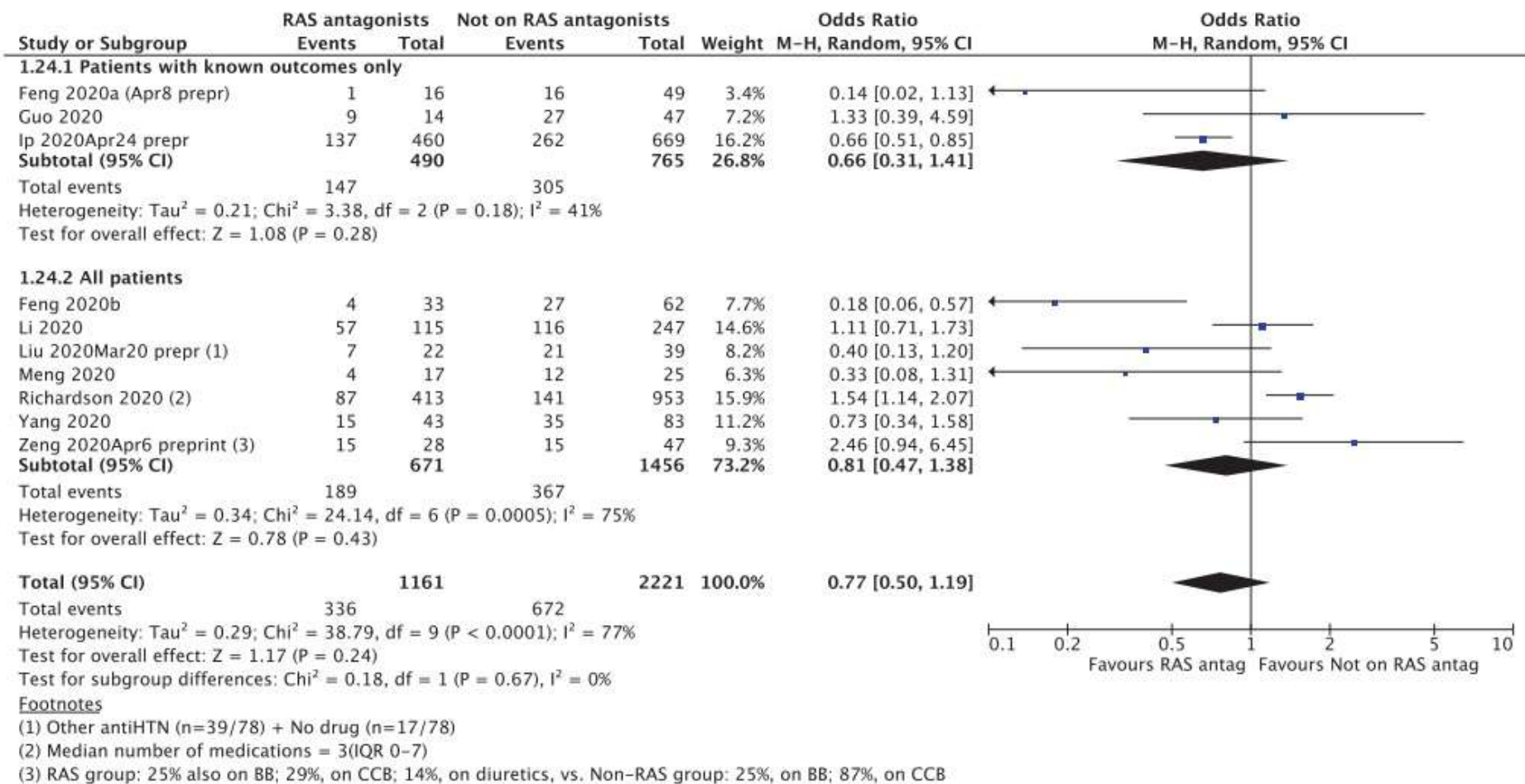


Figure 1. RAS antagonist vs Not on RAS antagonist: Severe COVID (Subgroup analysis based on country).



**Figure 2.** RAS antagonist vs Not on RAS antagonist: Severe COVID (Subgroup analysis based on definition of severity).



**Figure 3.** RAS antagonist vs Not on RAS antagonist: Severe COVID (Subgroup analysis based on inclusion only of patients with known outcomes, i.e., discharged or died).